

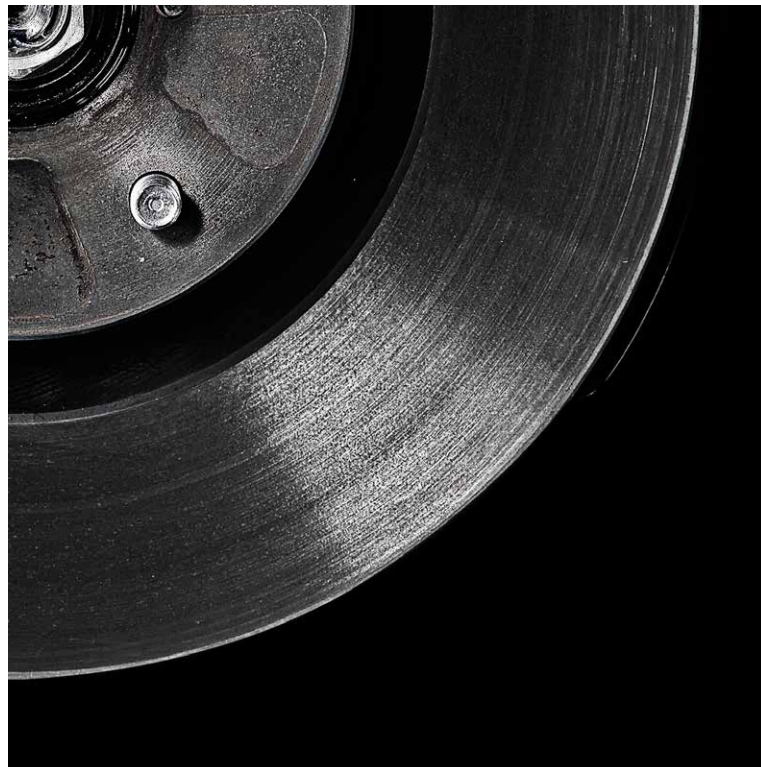
WRX / WRX STI



SUBARU

Confidence in Motion





ALWAYS DEMAND MORE.

Do more of what you love to do, and make no apologies for it.

The WRX and WRX STI were built to help you extract maximum excitement and adventure from every moment. No matter if it's during the journey, or at the destination, you'll always be ready to live life to the fullest. With invigorating excitement on the road, and support for all your adventures away from it, the WRX and WRX STI are ready to bring more what you crave in life, daily.



**THE POWER TO ESCAPE LIMITS.
THE CONTROL TO SHAPE POSSIBILITY.**



WRX

Exhilarating agility. Breathtaking performance. If it were any more fun, you'd have to charge admission. With handling made exceptionally precise by the control of Symmetrical All-Wheel Drive and surprising versatility, it will make you see the world in a whole new way. The only thing the WRX won't do is let you take your eyes off it or forget the way it makes you feel.

**LIGHTER. LOWER. MORE POWERFUL.
INTRODUCING AN ENGINE THAT PURIFIES EXCITEMENT.**



When was the first time you knew you loved to drive? The 2.0-litre turbocharged SUBARU BOXER Engine of the WRX will bring that exhilaration back with the punch of 197 kW and 350 Nm of torque that peaks at just 2,400 rpm. Not only does this engine offer startling acceleration with a flat torque curve and finely tuned response, but its design has a low profile, helping bring down the vehicle's centre of gravity and tighten its handling. This engine also incorporates advanced direct injection technology that helps maximise the effectiveness of every drop of fuel used. Combined with the newly available Sport Lineartronic transmission, you'll enjoy a surprising 6.7 L/100km on the highway.

WRX

SAFETY COMES FIRST. EVEN AS WE MAKE IT MORE FUN.

Safety is at the core of every Subaru. For the WRX, many of the innovations that make it more thrilling also make it safer, because the best way to protect yourself is to avoid hazards altogether. The grip of Symmetrical All-Wheel Drive helps increase your power to evade danger and take on less-than-ideal roads. Multi-mode Vehicle Dynamics Control offers customisable performance whilst helping you regain control if you lose traction. A redesigned frame offers improved safety characteristics thanks to the use of high-tensile steel, which makes it more resilient in a collision and heightens its handling precision. We've also added a knee airbag to protect the driver's lower extremities.

WRX





**YOU SHOULD ALWAYS BE
THE CENTRE OF ATTENTION.**



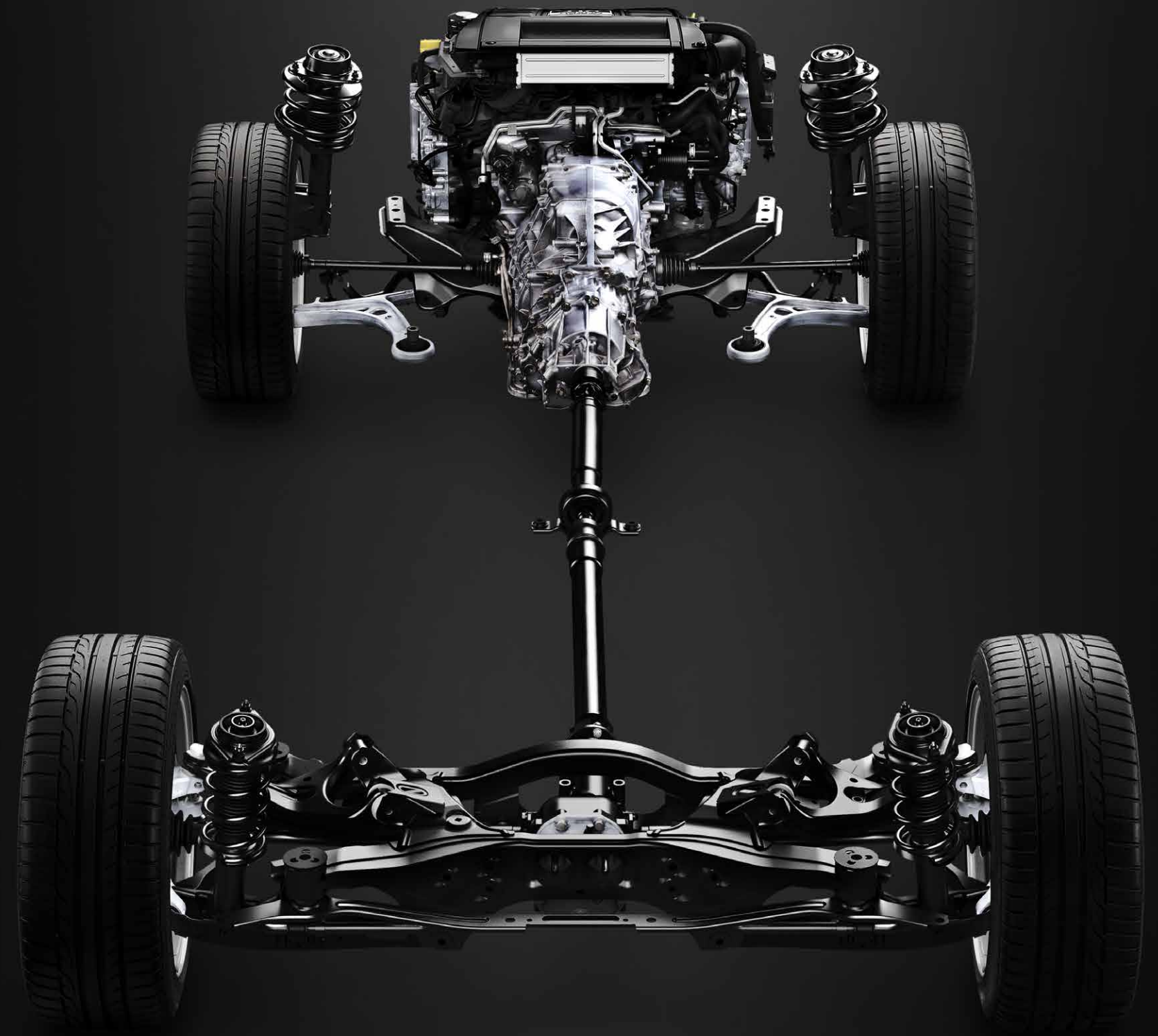
The cockpit design of the WRX redefines driver-centric. It surrounds you with controls that fall perfectly to your hands, and key information that is immediately accessible. As you take the thick, leather-wrapped steering wheel with a racing-inspired D-shaped design, you'll immediately feel the vehicle's focus on handling. Take a corner, and the deep bolsters of the sport-design front seats will keep you in the perfect spot to find the apex every time. The gauges and customisable displays offer precisely the information you want need, whether you're cruising through town or indulging the WRX on a canyon road.

WRX

SYMMETRICAL ALL-WHEEL DRIVE

Stability reassures on the road. But stability also offers agility that excites and inspires confidence. Subaru vehicles are gifted with a superior ability to put you in charge behind the wheel, thanks to the inherently stable design of Symmetrical All-Wheel Drive, which features the SUBARU BOXER Engine.

The unique design of this system efficiently delivers power to all four wheels at all times for enhanced control on all roads and in poor conditions. It also allows the main components to be aligned longitudinally for excellent side-to-side balance and handling precision. What's more, it creates a low centre of gravity for engaging responsiveness. The unique advantages of Symmetrical All-Wheel Drive make for exceptionally rewarding handling and empower you to better avoid danger.





**AN ATHLETE'S SOUL. A CHAMPION'S HEART.
A HIGH-PERFORMANCE LEGEND REBORN.**

WRX STI

For fans of motorsport worldwide, it takes just three letters to spell thrilling performance: STI. The WRX STI offers fresh styling, but the hood scoop and dramatic, downforce-generating rear spoiler leave no question about what it is, or what it's built for. Beneath the surface, it generates performance that is more focused and more invigorating than ever.

**DIAL IT IN. DIAL IT UP.
TAKE CONTROL, AND
TAKE IT TO THE LIMIT.**

From the moment you first fire it up, the WRX STI all but begs you let it loose on whatever curvy stretch of asphalt you can find. Its frame has been made 40%* more rigid for unbelievable controllability, and to make the most of every bit of ferocious grip coming from its exceptionally balanced Symmetrical All-Wheel Drive powertrain. Its track-tuned suspension is more responsive than ever with more rigid pillow ball bushings, an increased spring rate, stiffer front and rear stabiliser bars and additional rear subframe supports. This torsional rigidity and stability has reduced body roll by 16%* and has helped increase lateral acceleration by 7%*. It also features the Multi-mode Driver's Control Centre Differential (DCCD), which allows you tailor the torque split between the front and rear wheels.

* Comparison to 2013 WRX STI. Values are measured in accordance with standard measurement of Fuji Heavy Industries Ltd.

**WRX
STI**



**POWER DEFINES IT.
YOU CONTROL IT.**



Under the aluminium bonnet of the WRX STI sits the source of its breathtaking performance. A 2.5-litre turbocharged SUBARU BOXER Engine generating 221 kW and 407 Nm of torque provide electrifying acceleration. But it's performance that you can modify with SI-Drive, which allows you select three different levels of response—from smooth and efficient, to totally unhinged. The engine also benefits from the Dual Active Valve Control System (Dual AVCS), which helps produce a flat torque curve across a wide rev range. And you harness that performance with a quick-shifting, natural-feeling 6-speed transmission.

**WRX
STI**

WRX STI

In high-performance driving, every flick of your wrist or dart of your eye counts. The interior of the WRX STI is designed to heighten your driving experience by putting the controls and information you need where you expect to find them. The D-shaped steering wheel offers linear response and convenient controls for vehicle systems. Crisp electroluminescent gauges deliver information with hardly a glance, whilst the Multi-function Display can be modified to offer wide variety of vehicle data, including a digital boost gauge. And to help keep you in position to take control, the front seats feature deep bolsters and Alcantara®* inserts.

* Alcantara is a registered trademark of Alcantara S.p.A.

**DESIGNED TO LET
YOUR INSTINCTS TAKE THE LEAD.**



WRX / WRX STI PERFORMANCE TECHNOLOGY DEVELOPMENT

2.0-LITRE DIRECT INJECTION TURBO SUBARU BOXER ENGINE

WRX



MAX OUTPUT:
197 kW (268 PS) / 5,600 rpm

MAX TORQUE:
350 Nm (35.7 kgfm) / 2,400 - 5,200 rpm

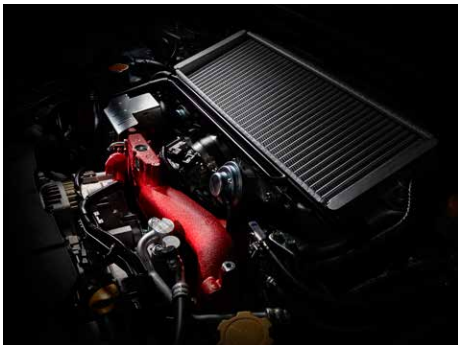
FUEL CONSUMPTION:
8.6 lit./100 km*1

CO₂ EMISSIONS:
199 g/km*1

Advanced direct injection technology makes it more efficient. And peak torque comes on more quickly for responsiveness that is easily accessible in any driving environment. What’s more, a long, flat torque curve means the thrilling power of the WRX stays with you longer.

2.5-LITRE DOHC TURBO SUBARU BOXER ENGINE

WRX STI



MAX OUTPUT:
221 kW (300 PS) / 6,000 rpm

MAX TORQUE:
407 Nm (41.5 kgfm) / 4,000 rpm

FUEL CONSUMPTION:
10.4 lit./100 km*1

CO₂ EMISSIONS:
242 g/km*1

Few motors have the same reputation for pure excitement on any road as the 2.5-litre turbo of the WRX STI. It flawlessly fuses raw power with total poise as its turbo spools almost instantaneously and unleashes power for intense acceleration. Proven over the years, its performance has been made only more thrilling in the WRX STI.

ACTIVE TORQUE VECTORING

WRX

WRX STI

This technology helps make handling more precise, whilst allowing you to push your vehicle closer to the limit. As you enter a corner and lateral g-forces take hold, the system can route power to select wheels to help you keep your intended line. This means your WRX STI responds to your steering input more immediately and more engagingly.

SPORT-TUNED CHASSIS

WRX

WRX STI

Years of heated competition, extensive testing and advances in materials and engineering, have combined to inspire chassis designs for the WRX and WRX STI. Exceptional stability and lightning quick response were central to this development, as high-tensile steel was employed throughout the frame to increase its torsional rigidity and better control the vehicle’s weight. What’s more, the suspension was tuned to exacting standards with stiffer stabilisers, quicker spring rates, and improvements like stiffer pillow ball bushings. This expertly balances stiffness and compliance to create immediate response and an unprecedented connection between driver, car and the road.



WRX / WRX STI CUSTOMISABLE DRIVING ENVIRONMENT

SI-DRIVE

WRX

WRX STI

Subaru Intelligent Drive (SI-DRIVE) lets you adapt the driving character of the WRX or the WRX STI to your needs or desires. Whilst in Intelligent Mode [I], acceleration is smooth with an eye toward optimal efficiency. Select Sport Mode [S] for linear response, and versatile command of every condition. To extract the maximum response from the turbocharged engine, switch to Sport Sharp Mode [S#]. It gives you the most direct throttle response and precise rev control across the entire rpm range.



MULTI-MODE DCCD

WRX STI

The Driver’s Control Centre Differential (DCCD) allows you to dial in the centre differential locking of the WRX STI and thereby shape its handling. It adjusts both an electromagnetic multi-plate transfer clutch and mechanical locking of a Limited Slip Differential (LSD) to apportion the torque to the front and rear wheels. Auto Mode finds the ideal power distribution for changing conditions, whilst Auto [+] keeps more power up front for increased traction. Auto [-] puts more power to the rear for tighter cornering, and the six-step Manual Mode lets you lock in your preferred handling characteristics.



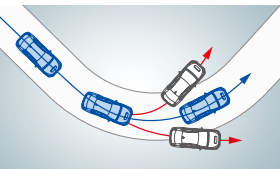
WRX / WRX STI HIGH-PERFORMANCE SAFETY

MULTI-MODE VEHICLE DYNAMICS CONTROL

WRX

WRX STI

Multi-mode Vehicle Dynamics Control (VDC) helps protect you from a detected loss of control whilst offering three distinct modes for flexible performance. Normal Mode fully engages the system. Change to Traction Mode to raise the threshold for intervention, thereby allowing you to maximise your control and the torque delivered to the wheels. You can even select Off Mode to deactivate Vehicle Dynamics Control.



AIRBAGS

WRX

WRX STI

The WRX and WRX STI offer front SRS*2 airbags, front-side and curtain SRS*2 airbags, and also the knee airbag, which helps protect the driver’s lower extremities.



HIGH BEAM ASSIST

WRX STI

For increased awareness and visibility, the WRX and WRX STI features High Beam Assist (HBA). HBA can automatically toggle between high and low beams depending on road conditions such as speed and oncoming traffic, enhancing visibility for you, and other drivers as well.

*1 Fuel consumption and CO₂ emissions: according to ECE R101-01.
*2 SRS: Supplemental Restraint System. Effective when used in conjunction with seatbelts.

WRX



Dark Grey Metallic



Ice Silver Metallic

WRX with Sport Lineartronic

DIMENSIONS.....	L x W x H: 4,595 x 1,795 x 1,475 mm	MAX OUTPUT.....	197 kW (268 PS) / 5,600 rpm
ENGINE.....	Horizontally-opposed, 4-cylinder, turbocharged DOHC, 16-valve, petrol.	MAX TORQUE.....	350 Nm (35.7 kgfm) / 2,400 rpm – 5,200 rpm
CAPACITY.....	1,998 cc	TRANSMISSION.....	Sport Lineartronic, AWD



EQUIPMENT



18-inch Aluminium Alloy Wheels
(Gun-Metallic)



Leather Wrapped D-shaped Steering
Wheel with Red Stitching



LED Headlamps with Auto Leveliser



Rear Lip Spoiler



Rear Diffuser and Twin Dual Tail Muffler

WRX STI



Crystal White Pearl



WR Blue Pearl

WRX STI with 6-speed Manual Transmission

DIMENSIONS.....	L x W x H: 4,595 x 1,795 x 1,475 mm	MAX OUTPUT.....	221 kW (300 PS) / 6,000 rpm
ENGINE.....	Horizontally-opposed, 4-cylinder, turbocharged DOHC, 16-valve, petrol.	MAX TORQUE.....	407 Nm (41.5 kgfm) / 4,000 rpm
CAPACITY.....	2,457 cc	TRANSMISSION.....	6MT, DCCD AWD



EQUIPMENT



18-inch BBS Forged Aluminium Alloy
Wheels (Dark Gun-Metallic)*



18-inch Aluminium Alloy Wheels
(Dark Gun-Metallic)



Brembo Brakes



Rear Large Spoiler



Stainless Side Sill Plates

* Optional.

ACCESSORIES



PERSONALISE YOUR RIDE.

Whilst every WRX and WRX STI comes generously equipped, Subaru accessories are the perfect way to tailor your Subaru to your life and your style. Whether you want to add convenience, enhance functionality, or personalise your WRX or WRX STI's appearance, Subaru accessories are designed to provide the same fit and quality as your Subaru vehicle. For more details, ask for the accessory brochure, or visit your nearest Subaru dealer.



STI Front Under Spoiler



STI Side Under Spoiler



STI Rear Under Spoiler



Exhaust Finisher



STI Alloy Wheel



Carpet Mat

SUBARU DIGITAL EXPERIENCE



SUBARU INTERACTIVE EXPERIENCE

To help you explore all things Subaru, we offer various digital materials with a wide range of exciting, interactive content such as 360-views and videos.

eBrochure

Experience the Subaru dynamic eBrochure for more details, including videos, photos and more.

subaru-global.com/ebrochure



SUBARU
Confidence in Motion

subaru-global.com



youtube.com/user/SubaruGlobalTV

Web Homepage

Visit our global homepage for complete information and news about Subaru and our vehicles.

YouTube

Subscribe to our channel to see all the latest videos and join the conversation about Subaru.

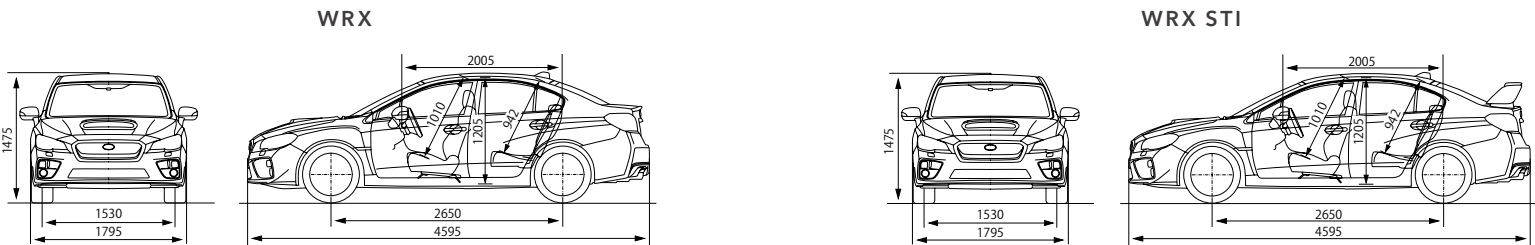


facebook.com/SUBARU.GLOBAL

Facebook

Stay connected to our diverse Subaru community and be the first to hear the latest news directly from Subaru.

DIMENSIONS



Dimensions are measured in accordance with standard measurement of Fuji Heavy Industries Ltd.
Fuji Heavy Industries Ltd. reserves the right to alter specifications and equipment without notice. Details of specifications, equipment, colour availability and the accessory lineup are subject to suit local conditions and requirements. Please inquire at your local dealer for details of any changes that might be required for your area.



SUBARU

Confidence in Motion

FUJI HEAVY INDUSTRIES LTD.
subaru-global.com

Printed in Japan (16BR GTKE 2015.05)