



Innovation
that excites

NAVARA



DEVOURS TERRAINS

3RD GENERATION YD25DDTi DIESEL ENGINE WITH VARIABLE GEOMETRY SYSTEM (VGS) TURBO INTERCOOLER

No matter the destination, the Navara will show how power, acceleration and fuel efficiency can not just coexist, but thrive. It offers a new and improved fuel economy by 11%. Paired with the seamless **6-Speed Manual** or **7-Speed Automatic Transmission with Manual Mode**, they both help squeeze the most performance out of every drop of fuel.



High Output	Mid Output
Max Power 190ps 3,600rpm	Max Power 163ps 3,600rpm
Max Torque 450Nm 2,000rpm	Max Torque 403Nm 2,000rpm
Power-to-weight Ratio: 101ps / tonne	Power-to-weight Ratio: 88ps / tonne
In comparison to Navara (D40 LE) Power-to-weight Ratio: 86ps / tonne	

FULL-LENGTH FULLY BOXED LADDER FRAME The toughest frame for the toughest jobs.



**7-SPEED AUTO
TRANSMISSION
WITH MANUAL
MODE**



SHIFT-ON-THE-FLY 4X4

Switch between 2WD and 4WD (4H) system with the twist of a dial at speeds of up to 100km/h.



MULTI-LINK REAR SUSPENSION

Provides better ride comfort, handling and stability.

Actual car specifications may vary from picture shown.

RIDE FIRST CLASS EVERY DAY

In the Navara, you'll find unexpected comfort and space from every angle. Now with its **improved seatback angle of rear seats**, and other premium features, you and your passengers are ensured of comfort in any drive.



ZERO GRAVITY INSPIRED SEAT AND POWER SEAT FOR DRIVER*

A new seat design with 8-way power adjustable capacity and 2-way lumbar support to reduce fatigue on long journeys.



DUAL ZONE AUTOMATIC CLIMATE CONTROL*

Maintains own ideal temperatures for both driver and passenger.



REAR AIR CONDITIONING VENTS

Improves rear passenger comfort and promotes better distribution of cool air within cabin.

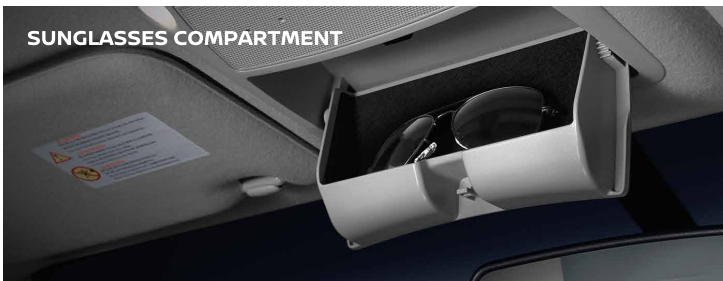


AUTO DIMMING REAR VIEW MIRROR WITH COMPASS*

Reduces glare of approaching vehicles while compass lets you know the direction you're headed.

STORE IT. HIDE IT. LOCK IT. CHARGE IT.

Thoughtfully designed, flexible interior with lots of storage for your convenience and cup holders almost everywhere you look mounted in the dash, next to front seat, in the rear and even into the door pockets. Top with total of 3 power outlets located in the cabin to ensure you and your passenger have a hassle free journey.



SUNGLASSES COMPARTMENT



DEEP DOOR POCKETS

Actual car specifications may vary from picture shown. *Available for VL and VL Plus only.

MASTER YOUR DOMAIN

All controls are in exactly the right places for quick mastery of your environment to ensure your safety wherever the journey takes you.



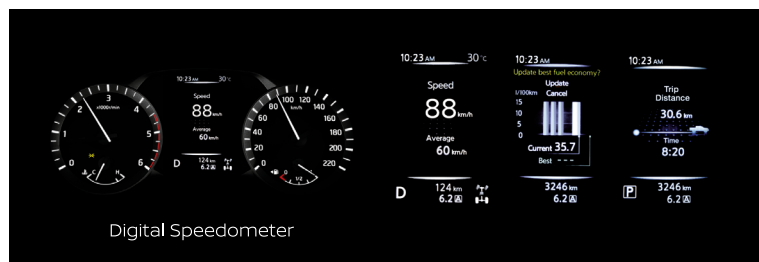
5" HIGH QUALITY INFOTAINMENT**

Infotainment display with FM/AM/CD/MP3 functions and USB/AUX Input.



INTELLIGENT KEY AND PUSH START BUTTON**

Lock, unlock and start your engine with a push of a button without taking out the i-key from pocket.



FULL COLOUR ADVANCED DRIVE ASSIST DISPLAY (ADAD)**

8 informative screens that allow driver to get various vehicle information.

- Driving Distance & time
- Fuel Economy
- Distance To Empty
- Digital Speedometer

UPPER TRAY WITH POWER OUTLET



CENTRE CLUSTER WITH USB AND POWER OUTLET



FRONT CUP HOLDER



FRONT CONSOLE WITH POWER OUTLET AND CUP HOLDERS



LARGE GLOVE COMPARTMENT



Actual car specifications may vary from picture shown. **Available for V, VL and VL Plus only.

OPTIONAL ACCESSORIES

Great value optional accessories to elevate your driving experience



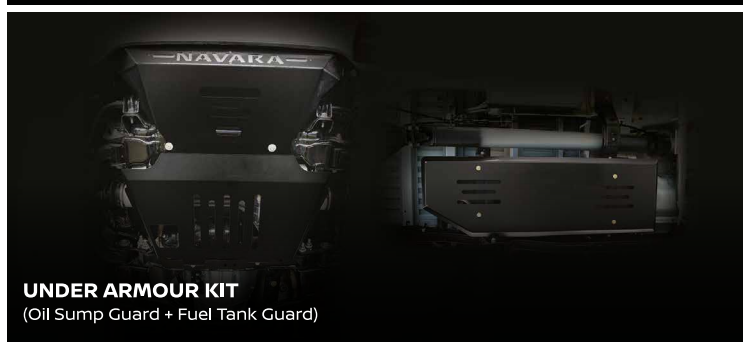
7" MULTIMEDIA NAVIGATOR

with Smartphone Connectivity Function, Reverse Camera, DVD Player, iPod Connectivity, USB & Bluetooth

RM3,818

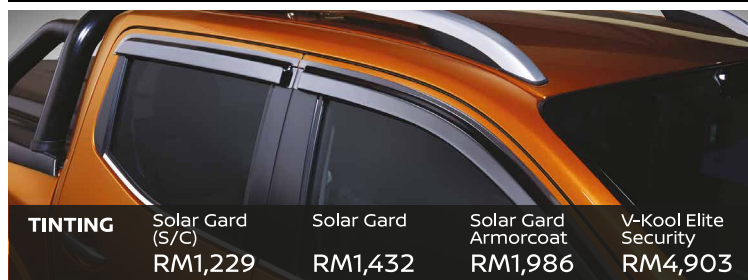


COMBINATION LEATHER SEAT



UNDER ARMOUR KIT

(Oil Sump Guard + Fuel Tank Guard)



TINTING

Solar Gard
(S/C)
RM1,229

Solar Gard
RM1,432

Solar Gard
Armorcoat
RM1,986

V-Kool Elite
Security
RM4,903



STAINLESS STEEL SPORT BAR

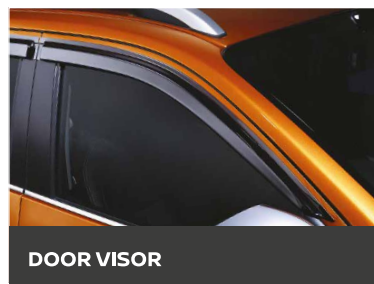
RM1,559



SIDE STEP

(Single Cab only)

ELEGANCE PACKAGE RM1,141



DOOR VISOR



DOOR HANDLE FINISHER



SPORT PEDAL* *Available for AT & MT



STAINLESS STEEL KICK PLATE

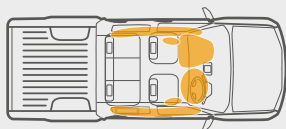
SURROUND YOURSELF WITH CONFIDENCE

The Navara is engineered with a range of innovative technology that enables it to have an intuitive response to every driving situation, for a smoother and more controlled ride.



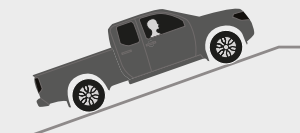
INTELLIGENT AROUND VIEW MONITOR (i-AVM)****

The system uses four cameras to give you a 360° birds-eye view of the vehicle for easier navigation.



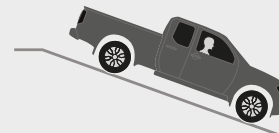
7 SRS AIRBAGS****

The SRS airbags include dual front, driver knee, side and curtain airbags that reduce the risk of injury resulting from impacts of various angles.



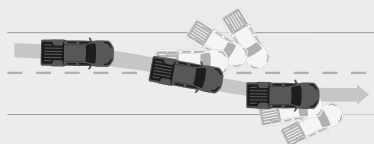
HILL START ASSIST (HSA)***

Up, up and smoothly away. HSA helps prevent rollback when starting on an incline.



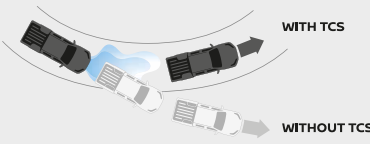
HILL DESCENT CONTROL (HDC)***

Descend on a steep decline safely, as HDC controls the brakes for you, letting you focus on steering.



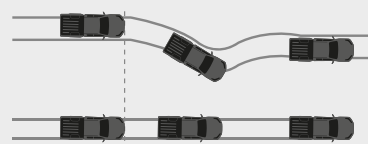
VEHICLE DYNAMIC CONTROL (VDC)***

The VDC system can help the driver to maintain control of the vehicle to prevent understeer or oversteer.



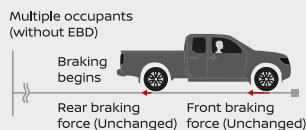
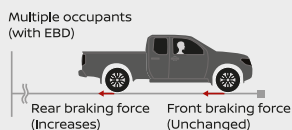
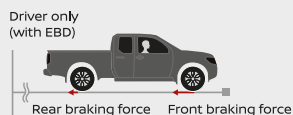
TRACTION CONTROL SYSTEM (TCS)***

Helps you maintain your steered path by reducing engine output and/or applying brake pressure to specific wheels when slip is detected.



ANTI-LOCK BRAKING SYSTEM (ABS)***

Helps preserve vehicle stability and steering control in emergency braking situations.

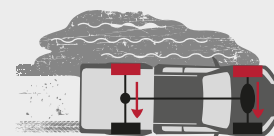


ELECTRONIC BRAKE-FORCE DISTRIBUTION (EBD)***

Minimises the difference in braking performance whether the vehicle load is light or heavy.

BRAKE ASSIST (BA)***

Generates better braking force than a conventional brake booster even with light pedal force.



ACTIVE BRAKE LIMITED SLIP (ABLS)***

Helps improve stability and provide the traction to keep your steering in control.

SINGLE CAB IS AVAILABLE FOR YOUR BUSINESS NEEDS

The **Navara** meets the need of all businesses with its combination of performance, innovation and endurance. A payload of up to 1 tonne to carry everything that you need. An Easy Bed Step to support up to a max. load of 250kg for convenient loading. Your ideal partner at work, Navara is The Ultimate Pickup.



PAYLOAD UP TO 1 TONNE WITH COMPLETE STEEL BODY

Length(mm): 2,310
Width(mm) : 1,560
Depth(mm) : 472

3RD GENERATION YD25DDTi DIESEL ENGINE
WITH VARIABLE GEOMETRY SYSTEM (VGS)
TURBO INTERCOOLER

Max Power
163ps
3,600rpm

Max Torque
403Nm
2,000rpm

6-SPEED MANUAL TRANSMISSION

1ST IN CLASS

EASY BED STEP
(SUPPORTS UP TO
MAX LOAD OF 250KG)

MULTI-LEAF SPRING
WITH SHOCK ABSORBER

SHIFT-ON-THE-FLY
4-WHEEL DRIVE



Actual car specifications may vary from picture shown.

TECHNICAL SPECIFICATIONS

Type	Double Cab						Single Cab
Grade	VL PLUS	VL	V	SE (AT)	SE (MT)		
Drive Train	4WD						
Engine Model	YD25DDTi (Diesel)						
Engine Type	In-line 4-Cylinder DOHC 16 Valves VGS (Variable Geometry System) Turbo Intercooler						
Fuel Supply System	Commonrail Controlled By ECCS (Electronic Concentrated Control System)						
Bore x Stroke (mm)	89.0 x 100.0						
Displacement (cc)	2,488						
Compression Ratio	15 : 1						
Max. Power (PS(kW)/rpm)	190 (140)/3,600			163 (120)/3,600			
Max. Torque (Nm(kg-m)/rpm)	450 (45.9)/2,000			403 (41.1)/2,000			
Fuel Tank Capacity (L)	80						
Transmission	7-Speed Auto With Manual Mode				6-Speed Manual		
Min. Turning Radius (m)	6.2				5.9		
Suspension							
Suspension - Front	Independent Double-Wishbone With Front Stabiliser Bar						
Suspension - Rear	Multi-Link With Shock Absorber						Multi-Leaf Spring with Shock Absorber
Dimensions							
Overall Length (mm)	5,255						5,235
Overall Width (mm)	1,850						1,790
Overall Height (mm)	1,840		1,810				1,775
Rear Bed (mm)	Length	1,465				2,310	
	Width	1,560				1,560	
	Height	474				472	
Wheelbase (mm)	3,150						
Wheel Size	Alloy 18"x7J			Alloy 16"x7J			Steel 16"
Tyre Size	255/60 R18			255/70 R16			205R16C
Exterior							
Headlamps	LED			Halogen			
LED Daytime Running Light	In Headlamps			At Bumper		-	-
Rear Spoiler	✓			✓	✓	✓	-
Roof Rail	✓			-	-	-	-
Interior							
Steering Controls	Audio, Bluetooth Handsfree, Cruise Control & ADAD (Advanced Drive Assist Display)				-	-	-
Intelligent Key (i-Key) With Push Start Ignition	✓			✓	-	-	-
Seats Material	Leather			Fabric			Vinyl
Zero Gravity Inspired Seats	✓			✓	✓	✓	-
Power Seat	Driver, 8-way with 2-way Lumbar Support			-	-	-	-
Audio	5" Display With FM/AM/MP3, AUX-In, USB Connectivity & 6 Speakers				Wide 2-Din FM/AM/MP3, AUX-In, USB Connectivity & 6 Speakers		CD Player with FM/AM /MP3 & 4 Speakers
Safety							
Airbags	7 SRS Airbags (Dual Front, Side Airbag x 2, Curtain Airbag x 2 & Driver Knee)	3 SRS Airbags (Dual Front & Driver Knee)	Dual Front				
Intelligent Around View Monitor (i-AVM)	✓	Rear View Camera			-	-	-
Anti-lock Braking System (ABS) with Electronic Brake-force Distribution (EBD) & Brake Assist (BA)	✓	✓	✓	✓	✓	-	
Vehicle Dynamic Control (VDC) & Traction Control System (TCS)	✓	✓	✓	✓	✓	-	
Active Brake Limited Slip (ABLS)	✓	✓	✓	✓	✓	-	
Hill Start Assist (HSA) & Hill Descent Control (HDC)	✓	✓	✓	✓	✓	-	
Child Seat Retainer (ISOFIX) With Tether (all variants except single cabs)	✓	✓	✓	✓	✓	-	
Alarm System & Central Door Lock	✓	✓	✓	✓	✓	Optional	

COLOUR OPTIONS



Savanna Orange **EAU**



Tungsten Silver **K23**



Diamond Black **G42**



Earth Brown **CAQ**
Available for V, VL and VL Plus only.



Brilliant White **QM1**
Single Cab is only available in solid white



EDARAN TAN CHONG MOTOR SDN. BHD. (230669-H)
A subsidiary of Tan Chong Motor Holdings Berhad (12960-7P)
www.nissan.com.my

Nissan Customer Care Centre: 1800-88-3838

Edaran Tan Chong Motor Sdn Bhd reserves the right to make any changes without notice concerning colours, equipment or specifications detailed in this brochure, or to discontinue individual models. The colours of vehicles delivered may differ slightly from those in this brochure. The specifications vary for different countries depending on local market conditions. Please consult your local dealer to ensure that the vehicle delivered accords with your expectations.



5-year/150,000km warranty, whichever comes first. Terms and conditions apply.